



# OGIO® Command 1/4-Snap OG151



Take command of your layering options in this 1/4-snap that mixes OGIO edge with a hint of fine merino wool.

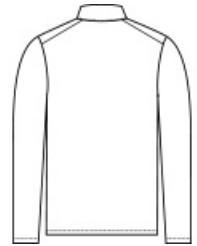
- 4.9-ounce, 85/15 poly/merino wool
- Double-knit with polyester wool jersey face and polyester mesh back
- OGIO heat transfer label for tag-free comfort
- Self-fabric cadet collar
- Matte black metal snaps
- Forward side seams
- Black reflective O heat transfer on front left hem

### CARE INSTRUCTIONS

Machine Wash Cold With Like Colors. Do Not Use Fabric Softener. Do Not Bleach. Tumble Dry Low. Remove Promptly. Cool Iron If Necessary.

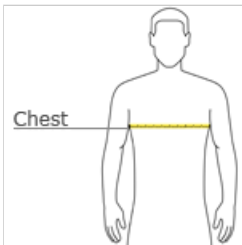


front



back

### HOW TO MEASURE



#### CHEST WIDTH

Measure under the arm and around the fullest part of the chest with arms down, keeping tape horizontal.

### SIZE CHART

	XS	S	M	L	XL	2XL	3XL	4XL
Chest	32-34	35-37	38-40	41-43	44-46	47-49	50-53	54-57

### COLOR INFORMATION



Blacktop  
PMS BLACK C



Gear Grey  
PMS COOL GRAY  
11C



Spar Blue  
PMS 2189C